

Frame & rollers ref. 120

General

For a print shop in the North of the Netherlands a frame with rollers was designed, built and installed.

Purpose was to enable Isra Vision AG to mount their in-line print inspection system on a Windmoeller & Hoelscher printing press.

The lead time for the delivery was 8 weeks and the actual installation was done within half a day.



Technical data

FRAME:

- Aluminium flanges, fully machined out of a single piece of material;
- Steel interconnectors;
- Clamped onto the existing machine frame (no on-site drilling required);
- Over all precision within 0.05 mm.

IDLE ROLLERS:

- Aluminium rollers on stationary steel shafts, some grooved, others smooth;
- SKF precision ball bearings;
- Dynamically balanced to 1450 rpm;
- The rollers are adjustable but set to designed position within 0.05 mm.

ENCODER ROLLER:

- Aluminium roller with special coating on rotating steel shaft;
- With encoder fixtures;
- SKF precision ball bearings;
- Dynamically balanced to 1450 rpm.

OTHER SPECIFICATIONS:

- All aluminium parts anodized;
- Total weight approx. 420 kg.



Quality to rely on

The frame and rollers are extremely stable. This means the web will pass smoothly in front of the cameras and above all: the cameras and lights themselves will not vibrate. This forms the basis of a reliable web inspection.

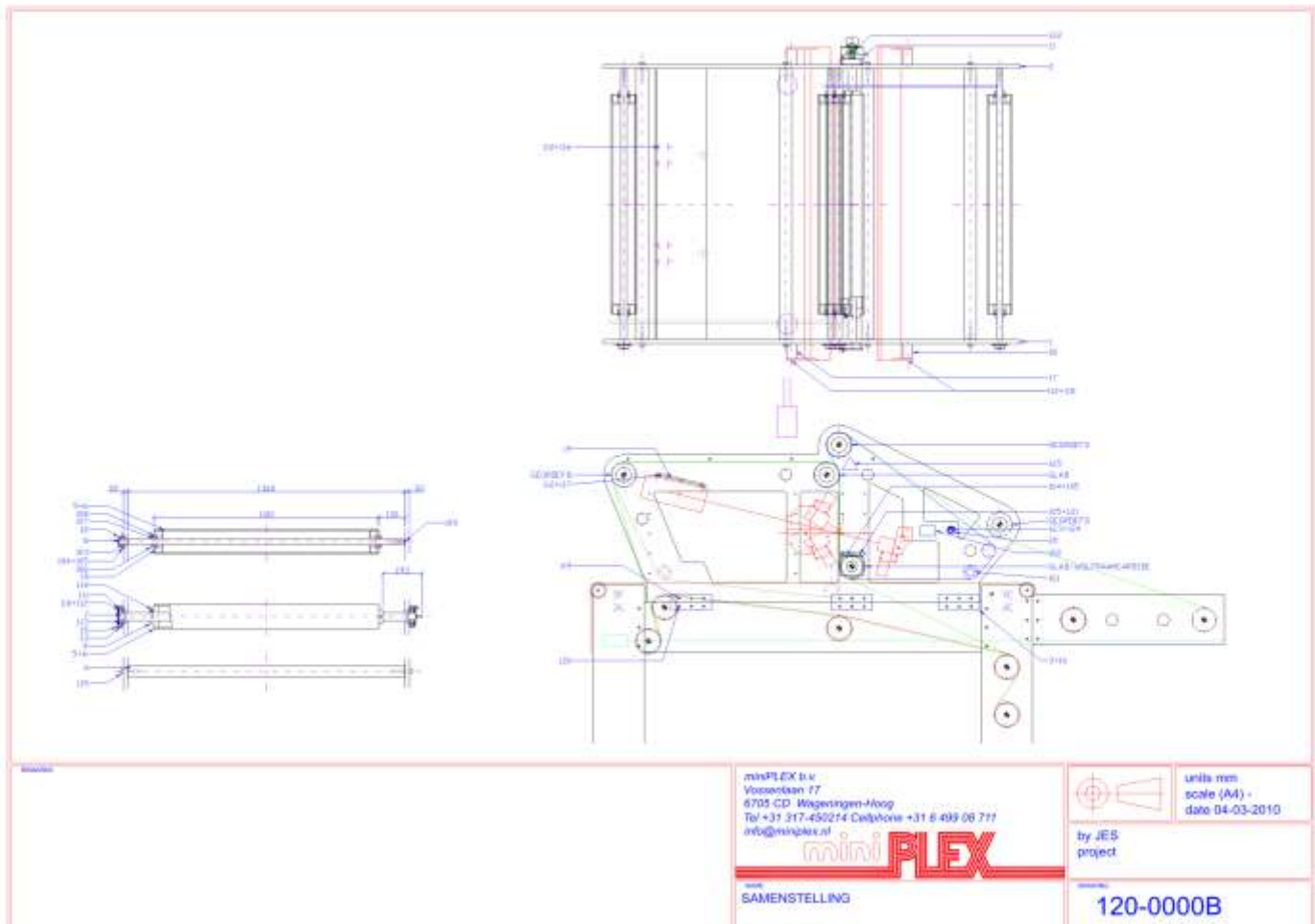
Included items

The delivery comprised:

- frame and rollers;
- encoder fixtures;
- camera & light fixtures;
- manual;
- parts list;
- CE declaration of conformity;
- setting tools.



Assembly drawing



Contact

miniPLEX B.V.
Vossenlaan 17
NL 6705 CD Wageningen-Hoog
The Netherlands

Cell phone +31 (0) 6 499 08 711
Phone +31 (0) 317 45 02 14
E-mail info@miniPLEX.nl
Web www.miniPLEX.nl

